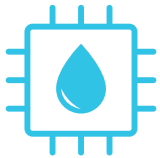




metro  
PURE WATER

WATER FOR WELLNESS

## i12 ICE/WATER DISPENSER



### Innovative Design & Technology

- Hot, cold, and ambient water plus ice dispenser
- Touchless sensor operation
- Ergonomic comfort-height design



### Advanced Hygiene Features

- Built in touchless dispense
- State-of-the-art reverse osmosis purification
- Elegant “bullet” ice



### Bullet-Proof Reliability

- Leak protection system
- Energy efficiency mode



**Now with built in touchless dispense!**



MetroPureWater.com

833-PURE-ICE (787-3423)  
14450 N 169 Hwy Suite R  
Smithville, MO 64089

Certified by IAPMO in accordance with ANSI/NSF 372 for lead free products and certified by IAPMO R&T in accordance with UL 399 and CSA 22.2 for electrical safety.

Dual LED UV-C light

Closed system (added air filter and sealed reservoir)

Hot, cold, and ambient water and bullet ice

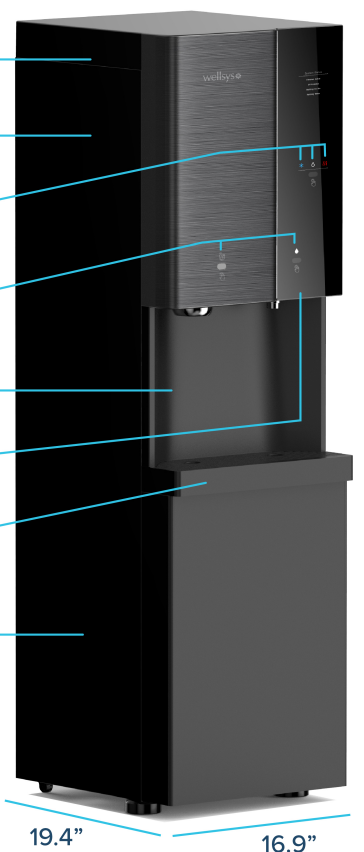
Touchless operation

Increased dispense height (from 8" to 10")

New glass front

Removable large drip tray for easy cleaning

State-of-the-art reverse osmosis purification



58.7"

\*When used with Wellsys proprietary filtration

## Description

## Specification

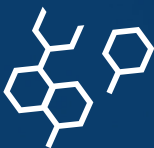
Weight	119.5 lbs (54.2 kg)
Dimensions	16.9" w x 58.7" h x 19.4" d
Cold Tank Capacity	1.2 gallons (4.7 liters)
Ambient Tank Capacity	4.5 gallons (16.9 liters)
Hot Tank Capacity	1.2 gallons (4.6 liters)
Ice Production	44 lbs/day (19.9 kg/day)
Ice Storage	8.8 lbs/day (4 kg/day)
Dispense Area	10"
Recommended Water Pressure	60-70 psi
Rated Voltage/Frequency	110v/60Hz @ 6.5 amps
Power Consumption	2.83 kWh/24 hours

## Wellsys Technology Purification Process



### Sediment Filter

Reduces particles such as dirt, silt, rust, and pipe residue.



### Pre-Carbon Filter

Reduces chlorine, chemicals, and pesticides.



### Reverse Osmosis Membrane

Reduces dissolved solids, pharmaceuticals, and metals.



### Post Carbon Filter

Final polishing filter ensures great taste.